



Empowering Future-Ready Manufacturing with Cutting-Edge MES Solutions

Connect, Collect, Control, and Collaborate

Elisa Industriq analyst event
Bryan Ng – CEO of camLine Group



Why Manufacturers Choose camLine



Global Leader

Worldwide Presence

Empowering manufacturers in **over 50 countries** with **350+ experts**.



Trusted Partner

Industry Recognition

Delivering **premium MES/MOM solutions** and **quality systems**, tailored to semiconductor and high-tech manufacturing



Focused

Agile Offerings

Modular MES Suite: Boosting quality, efficiency & traceability through advanced data science and automation capabilities

Selection of Cross Industries Customers

Research & Development

Advancing innovation through smart lab & cleanroom solutions



SUNY POLYTECHNIC INSTITUTE

Semiconductors & Foundries

Enabling high yield & quality in complex chip manufacturing



Automotive

Driving quality & efficiency across the automotive value chain



SCHAEFFLER



Computing & Lighting

Empowering operational intelligence in electronics manufacturing



Medical Devices

Ensuring traceability & compliance for patient safety

B. BRAUN

Medtronic

Renewable Energy

Enabling sustainable manufacturing for solar & battery technologies



Advanced Materials & Packaging

Intelligent solutions for demanding material & packaging processes



* All logos and trademarks are property of their respective owners.

camLine Business Model



Products and Solutions
Proven Products and Industry-Tailored Solutions

With over 35 years of experience, we have developed a robust portfolio of MES products and solutions together with industry leaders across various sectors. Our offerings, such as Rapid Root Cause Analysis and Quality-Driven Manufacturing, are field-tested and tailored to the specific needs of our customers.



Consultation
Proven Products and Industry-Tailored Solutions

Our team of skilled consultants delivers Best Known Methods (BKM) and integrates proven solutions for multi-site manufacturers. We bring in-depth industry expertise and cross-functional knowledge to help our clients optimize their operations, drive operational intelligence, and pave the way for Industry 5.0.

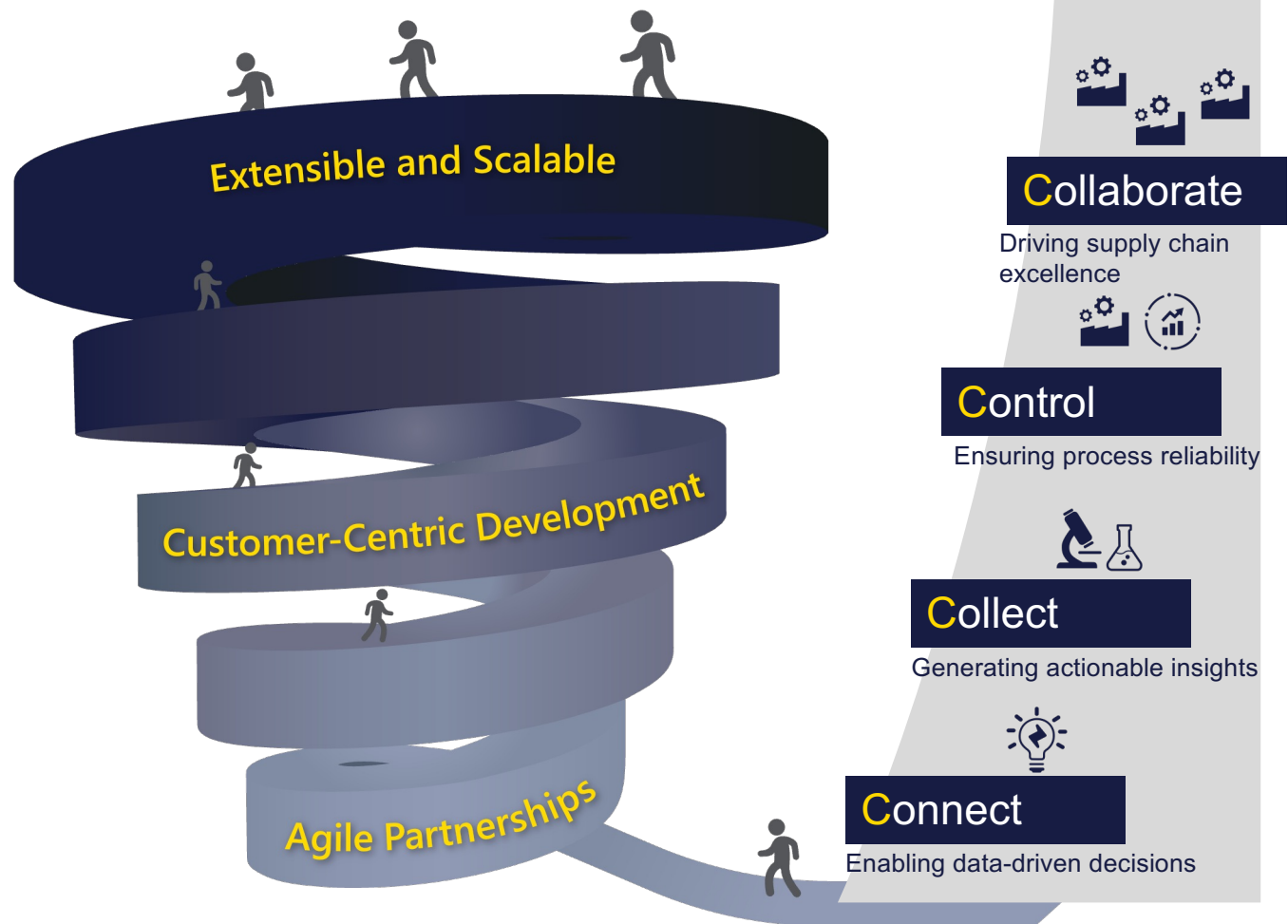


Projects & Services
Long-Term Partnerships for Continuous Success

We value long-term partnerships and strive to be your trusted, agile, efficient, and reliable partner. Our commitment to delivering projects on time, on budget, and on quality has earned us the trust of leading manufacturers worldwide. With our suite of services, including implementation, training, and support, we enable continuous improvement and success.

Manufacturing Excellence

As a key pillar of Elisa Industriq, camLine drives global leadership in **Manufacturing AI**, united by shared values of Innovation & **Manufacturing Excellence**



camLine Solution



Mission Critical: End-to-End Traceability

Ensuring Quality, Compliance & Fast Issue Resolution

Comprehensive View

From Sand to Chip to Device
From Quartz to Cell to Solar Panel
From Powder to Cell to Battery Pack
From Parts to Vehicle to Driver

End-to-End Visibility:
Enabling confident decisions across
industries

Quick Issue Resolution

From Weeks to Hours
From Days to Minutes

Rapid Root Cause Analysis:
Boosting problem-solving with advanced data
science

Quality Assurance

ISO 9001
FDA 21 Part 11
IATF 16949

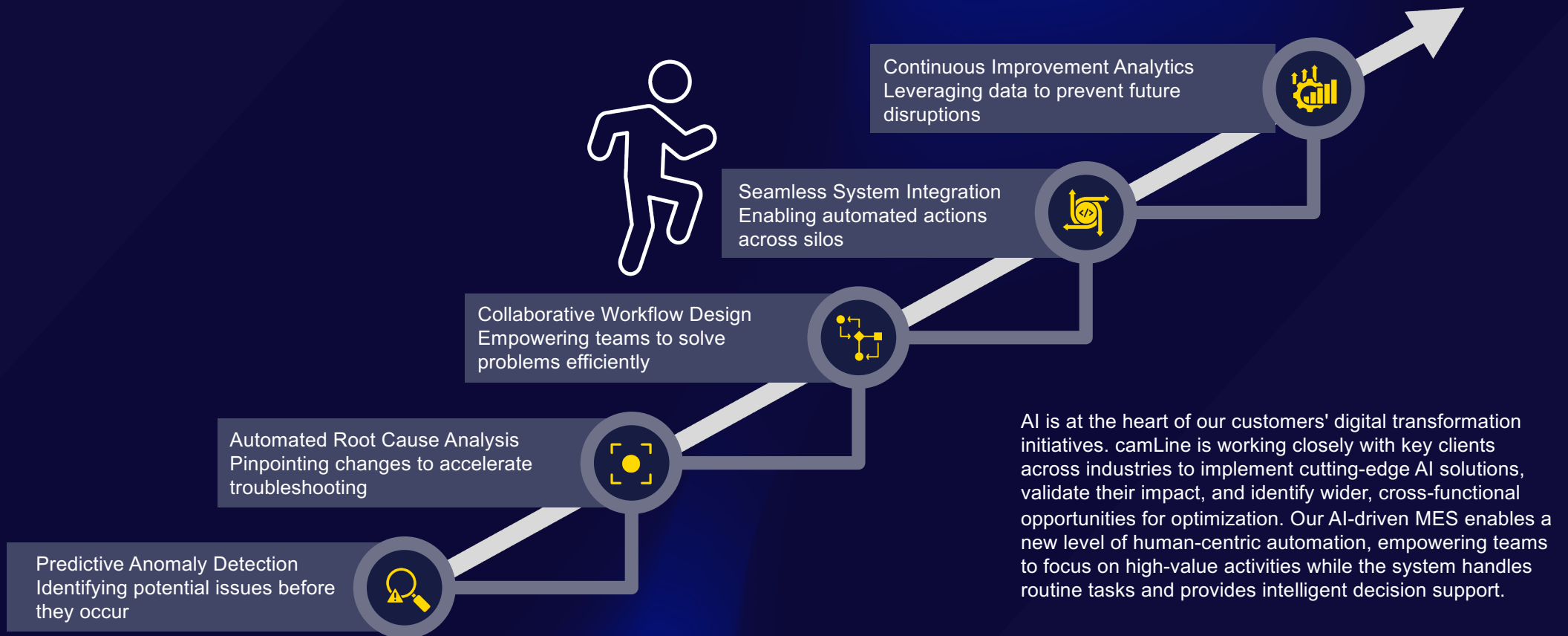
Quality-Driven Manufacturing: Ensuring highest
standards across industries with camLine MES

Customer Success Story


Implementation of
LineWorks Line Controller
in the Memory Industry



AI Journey Enabling Human-Centric Automation



Embracing Industry 5.0



A person in profile is shown interacting with a glowing, translucent digital human figure. A speech bubble from the digital figure contains text about AI-driven automation. The background is dark blue with glowing particles.

Human-Centric Automation

Powered by advanced data science and automation

camLine is paving the way for Industry 5.0 by seamlessly integrating skilled human workers with AI-driven automation processes. Our human-centric approach leverages advanced analytics to augment human capabilities and enable collaborative problem-solving.



A factory floor is shown with multiple orange robotic arms working on a production line. The scene is overlaid with a network of glowing blue nodes and lines, representing connectivity and data flow.

Beyond Efficiency

Enabling continuous improvement and upskilling

While Industry 4.0 focuses on efficiency and connectivity, camLine's vision for Industry 5.0 goes further. We empower human ingenuity and creativity in manufacturing through our innovative eLearning Platform, fostering continuous improvement and upskilling across the workforce.



A person is shown interacting with a large, complex digital interface displaying various data visualizations, charts, and maps. The interface is overlaid on a cityscape at night.

Future-Ready Solutions

Empowering Operational Intelligence across industries

camLine's readiness for the next industrial evolution positions us as a forward-thinking leader in the MES space. Our future-proof solutions, including rapid root cause analysis and quality-driven Manufacturing, empower businesses across industries to embrace digital transformation and thrive in the era of Industry 5.0.

Thank you

 @camlinetv

 linkedin.com/company/camline

 camline.com

 info@camline.com

Work Smarter Series:
camline.com/work-smarter/